



品质卓越，上善永续

Excellent Quality, Consistent Developing

洛阳鼎红电气科技有限公司

Luoyang Dinghong Electric Technology Co., Ltd

地址: 中国·河南省洛阳市洛新产业集聚区新新路5号

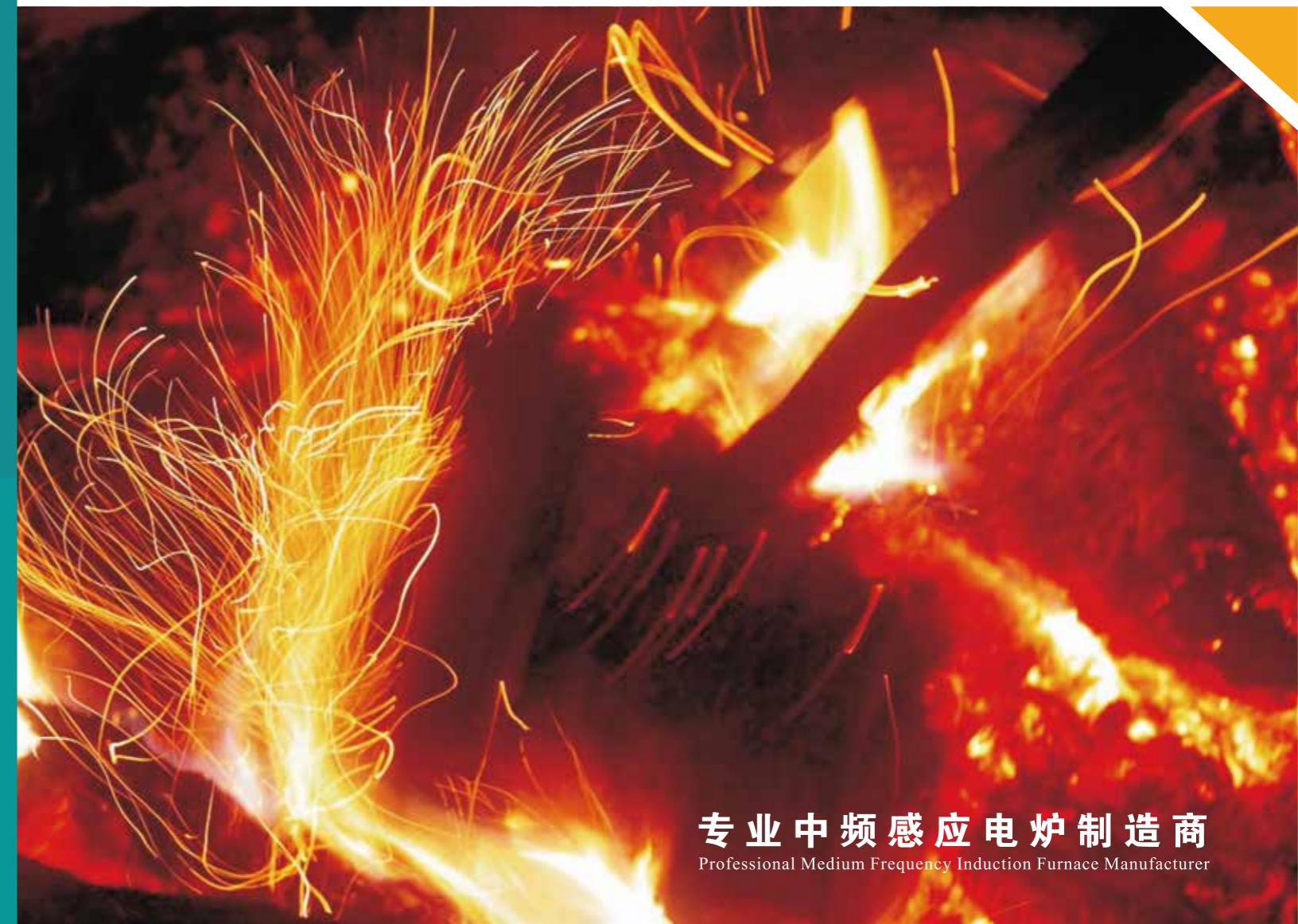
Address: No.5, Xinxin road of Luoxin Industry District, Luoyang city, Henan province, China

网址/Web: www.dinghonginduction.com

邮箱/E-mail: global@dhinduction.com

电话/Tel: +86-37965167728

传真/Fax: +86-37967315666



专业中频感应电炉制造商
Professional Medium Frequency Induction Furnace Manufacturer

Since 1990



依人品做产品 靠诚信拓市场

Relying on spirit to produce products
Relying on integrity to develop markets

环保 节能 安全 稳定
Environmental protection Energy saving Safety Stability

目录 CONTENTS

关于我们.....	1
About us	
中频成套设备布置图.....	5
Layout diagram of medium frequency complete equipment	
中频电源.....	7
Medium frequency power supply	
中频电炉.....	15
Medium frequency induction furnace	
我们的技术.....	25
Our technology	
我们的配件.....	31
Our accessories	
我们的现场.....	35
Our site	
售后服务.....	39
After-sales service	



关于我们的 About us

洛阳鼎红电气科技有限公司（原洛阳鼎红炉业有限公司）位于洛阳市洛新产业集聚区新新路5号，是感应加热成套设备的专业生产企业，产品广泛用于冶金、机械、建材、汽车制造等行业。

公司拥有行业尖端水平，不断追求高科技产品，并与国内科研院所合作，不断追求科技创新，推出的新型节能十二脉整流串联电炉和新型节能串联逆变电炉，可实现一套电源带多台炉体同时工作。以低耗能、高效率、易控制、无污染、谐波小、安全可靠的特点得到了市场认可和客户信任，是目前用户的最佳选择。

我们始终以一言九鼎的服务承诺为基础，以一流的产品质量为保障，竭诚为广大客户提供最优秀的服务，希望您携手共创未来!

2019年，我们成立洛阳鼎红机械设备有限公司。公司以市场需求为导向，整合产业上下游的资源，在全球范围内，为合作伙伴提供全面的、综合的产品和专业的贸易服务，做有温度的综合贸易服务商。公司秉承“专业化、市场化、国际化”经营理念，努力构建全球伙伴关系，为客户提供高品质产品和服务，创造共赢价值。

Luoyang Dinghong Electric Technology Co., Ltd. (formerly Luoyang Dinghong Furnace Industry Co., Ltd.) is located at No. 5 Xinxin Road, Luoxin Industrial Agglomeration Zone, Luoyang City. It is a professional manufacturer of induction heating complete sets of equipment, and its products are widely used in metallurgy, machinery, building materials, automobile manufacturing and other industries.

The company has industry-leading capabilities, constantly pursuing high-tech products, and collaborating with domestic research institutes to continuously pursue technological innovation. It has launched new energy-saving twelve pulse rectifier series electric furnaces and new energy-saving series inverter electric furnaces, which can achieve simultaneous operation of multiple furnaces with one power supply.



It has gained market recognition and customer trust for its characteristics of low energy consumption, high efficiency, easy control, no pollution, low harmonics, and safety and reliability, and is currently the best choice for users.

We always adhere to the service commitment of one word, guarantee first-class product quality, and wholeheartedly provide the best service for our customers. We hope to work together with you to create a better future!

In 2019, we established Luoyang Dinghong Machinery Equipment Co., Ltd. The company integrates upstream and downstream resources of the industry to provide various comprehensive products and professional trade services for partners worldwide, acting as an omnibus trade service provider well recognized due to its attentive service. Adhering to the business philosophy of "specialization, marketization and internationalization", we strive to build a global partnership, thereby creating a win-win situation and providing clients with high-quality products and services.



▶ 我们的团队

OUR TEAM

公司的主要技术及管理人员都长期在中频感应熔化系统领域从事技术和管理工作,在设备的设计、工艺、制造方面都拥有极其丰富的经验,并在此基础上总结形成了对中频感应熔化系统独特的理解和实现方式,拥有在产品设计中加以落实的能力,基于我们强大的技术实力,所有的产品都拥有自主知识产权。截至2025年,我司已累计获得专利技术30余项。

Our main management and technical engineers have been engaged in technical management of medium frequency induction melting systems for a long time. They are experienced in the designing, processing, manufacturing and management of induction furnace. Based on this, they have formed a unique understanding and implementation of the medium frequency induction melting system. And they have the ability to implement it into product designing. Based on our strong technical strength, all products have independent intellectual property rights. By 2025, we have obtained more than 30 patent technologies.



▶ 企业资质

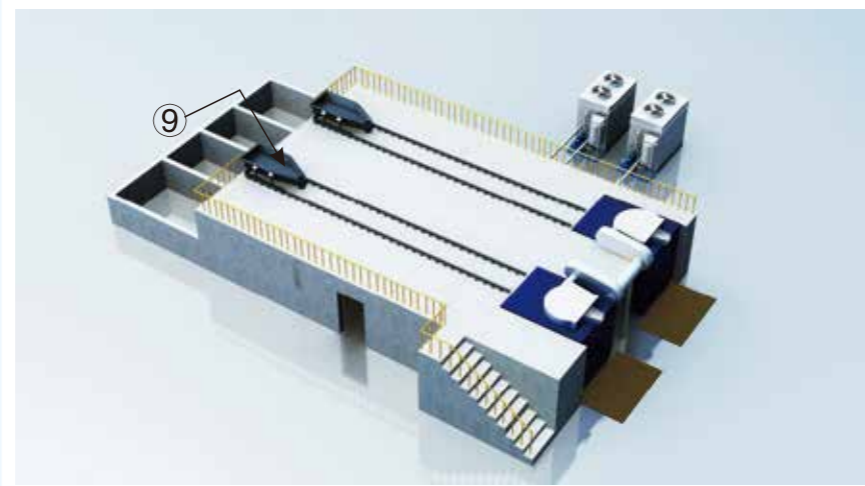
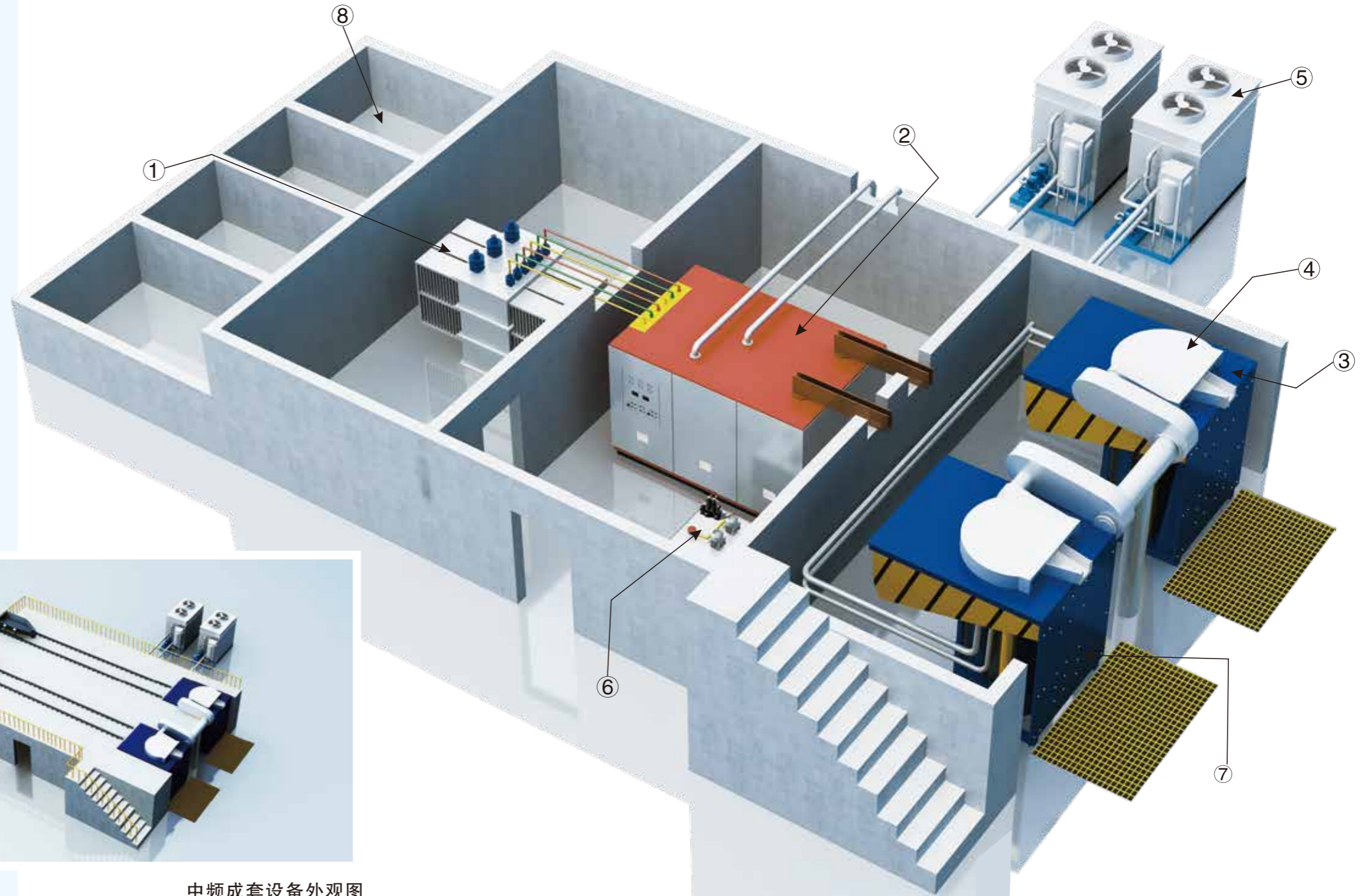
Qualification of company



中频成套设备布置图

Layout Diagram of Medium Frequency Complete Equipment

- ① 整流变压器
Rectifier Transformer
- ② 中频电源柜
Medium Frequency Power Supply
- ③ 熔炼炉
Melting Furnace
- ④ 旋风式除尘炉盖
Cyclone type Furnace Cover For Dust Removal
- ⑤ 闭式冷却系统
Closed Type Cooling System
- ⑥ 液压泵站
Hydraulic Pump Station
- ⑦ 防跌落保护罩
Anti-drop protective cover
- ⑧ 料池
Skip
- ⑨ 自动加料车
Automatic Loading Car



中频成套设备外观图
Appearance Diagram of Medium Frequency Complete Equipment

www.dinghonginduction.com

中频电源

Medium frequency power supply

工艺先进 / 设备完善 / 质量可靠

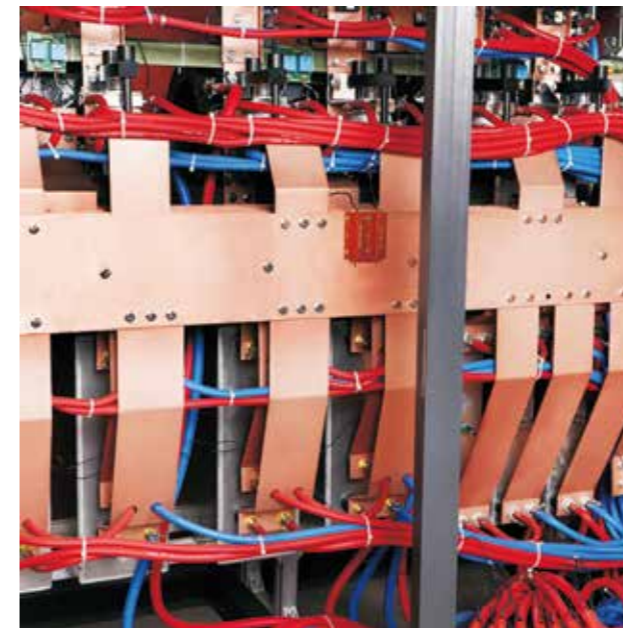
Advanced Technology/Perfect Equipment/Reliable Quality



电源描述

Power supply description

- ◆电源柜：人性化的设计贯穿整个电源柜设计，易于维护；宽大的输出铜排，损耗低，布局合理。
- ◆控制柜：控制柜在前门上布置隔离控制室，装有主控板、反馈板、控制电源等部件，可以方便地检测主控板的信号。
- ◆逆变电路：大功率逆变可控硅组成了半桥逆变电路，将直流电转变成中频交流电。



- ◆ Power cabinet: Humanized design runs through the whole power cabinet design and is easy to maintain. Wide output copper bar, low loss, reasonable layout.
- ◆ Control cabinet: The control cabinet is equipped with isolation control room on the front door, equipped with main control board, feedback board, control power supply and other components, which can conveniently detect the signals of the main control board.
- ◆ Inverter circuit: high-power inverter thyristor forms a half-bridge inverter circuit, which converts direct current into intermediate frequency alternating current.



- ◆ High Efficiency. One set of power supply can be used with two or three furnaces at the same time. The smelting and heating preservation power can be arbitrarily distributed according to your requirements without melting interruption. And it can be kept at an accurate temperature for heating preservation, temperature rising, quenching and tempering etc. to maximize the production.

Medium frequency power supply efficiency $\geq 98\%$.

$\cos\phi \geq 0.95$ when operating in any power state.

Power startup successful rate is 100% optional.

$\cos\phi \geq 0.95$ when the molten iron in the furnace is a small flow.

The molten iron in the furnace is adjustable in the range of 0-100%.

It saves more than 10% of electricity and it is faster than ordinary electric furnaces.

- ◆ The series inverter rectification side adopts uncontrolled rectification to ensure that the power factor reaches 0.95 at any power. The inverter side uses voltage resonance to increase the furnace voltage and reduce the power loss.

- ◆ Good start-up characteristics, and it can be started at random under full load and heavy load conditions. The startup success rate is up to 100%.

- ◆ Constant power output and power output adopts digital constant power control technology. During the melting process, when the load temperature changes, the load is always full power output to shorten the melting time.

串联一拖二、一拖三中频电源

One drive two, one drive three medium frequency power supplies in tandem series

- ◆效率高。一套电源可同时带两台或三台炉子。熔炼、保温功率可根据需要任意分配，不间断熔炼，需要时可在准确温度下保温、升温、调质等，最大限度提高生产量。

中频电源效率 $\geq 98\%$ ；

任何功率状态运行时 $\cos\phi \geq 0.95$ ；

电源启动成功率可达100%；

炉内铁水为小流量时 $\cos\phi \geq 0.95$ ；

炉内铁水在0-100%范围内可调；

比普通电炉省电10%以上，速度更快。

- ◆串联逆变整流侧采用不控整流，确保在任意功率下功率因数达0.95。逆变侧采用电压谐振，提高炉体电压减少电能损耗。

- ◆良好的启动特性，在满载、重载状态下，都能随意启动，启动成功率达100%。

- ◆恒功率输出，功率输出采用数字恒功率控制技术，在熔炼过程中，负载温度变化时，其负载始终满功率输出，从而缩短熔炼时间。



▶ 12脉并联中频电源

12 pulse parallel medium-frequency power supply

- ◆ 并联谐振电路，电路简单、运行可靠、调整方便，对负载适应能力强，适应范围广泛；
- ◆ 全集成化控制线路，具有过压、过流、逆变失败、水压不足等多种保护功能；
- ◆ 采用严格、充分的条件进行启动，保证启动成功率达到100%；
- ◆ 逆变触发系统采用锁相跟踪控制方式，保证逆变部分在高功率因数下运行。



- ◆ 中频电源效率 $\geq 95\%$;
- ◆ 任何功率状态运行时 $\cos\phi \geq 0.92$;
- ◆ 电源启动成功率可达100%。

The efficiency of power supply $\geq 95\%$.
It working in any power situation $\cos\phi \geq 0.92$.
The success rate of power start can reach 100%.



- ◆ Parallel resonant circuit, simple circuit, reliable operation, convenient adjustment, strong adaptability to load and wide adaptability.
- ◆ Fully integrated control circuit with over-voltage, over-current, inverter failure, insufficient water pressure and other protection functions.
- ◆ Start with strict and sufficient conditions to ensure that the startup success rate reaches 100%.
- ◆ Inverter trigger system adopts phase-locked tracking control mode to ensure that the inverter part operates under high power factor.

▶ 12脉串联中频电源

12 pulse series connection medium-frequency power supply

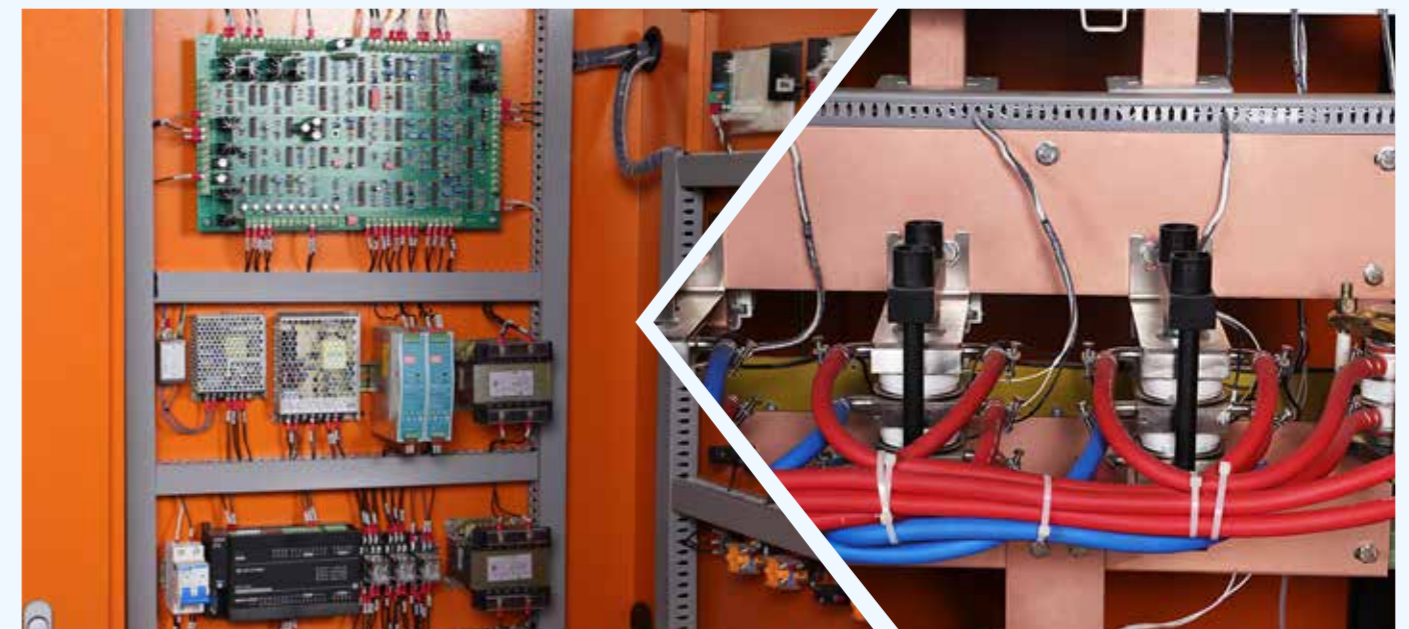
- ◆ 本电源可采用380V-660V 电压供电；
- ◆ 12脉冲对供电无污染符合国家要求；
- ◆ 炉内铁水在0-100%范围内功率均可调到最大；
- ◆ 在不提高进线电压的情况下，将整流输出电压提高一倍，降低了电路损耗。

This power can adopt 380V-660V voltage.

12 pulse power is environment friendly and non-pollution according to industry standard.

The power can be adjusted to maximum with the molten iron in 0-100%.

The rectifier output voltage is doubled without increasing the line voltage to reduce the circuit losses.



www.dinghonginduction.com

中频电炉

FURNACE TECHNOLOGY

安全 / 坚固 / 高效率 / 维修便捷

Safe / Sturdy / High Efficiency / Easy to Maintain



炉体描述

Electric furnace description

- ◆洛阳鼎红开放式炉体包含炉架、旋风式除尘炉盖、倾炉油缸、炉盖升降、磁轭、高压无碳胶管、集分水器、全套进水分配器、回水集水器及卡箍、整体炉底浇铸块等。
- ◆炉体采用矩形无缝钢构成的开放式炉架。整体结构简洁，坚固，最大炉体倾斜角度为95度。炉平台由耐火材料打制，保护炉平台钢板不变形，磁轭碟形垫片紧固，全部胶管和卡箍为进口产品。
- ◆感应炉上端部件可拆卸，方便线圈更换。



- ◆Luoyang Dinghong open furnace body comprises a furnace frame, cyclone dust removal furnace cover and a tilting furnace oil cylinder, a furnace cover lifting, a magnetic yoke, a high-pressure carbon-free rubber tube, a water collecting and separating device, a full set of water inlet distributors, a water return and collecting device and clamps, an integral bottom pouring block, etc.
- ◆The furnace body adopts an open furnace frame made of rectangular seamless steel. The overall structure is simple and firm, and the maximum inclination angle of the furnace body is 95 degrees. The furnace platform is made of refractory material to protect the steel plate of the furnace platform from deformation. Fastening disk gasket of yoke. All rubber tubes and clamps are imported products.
- ◆The upper part of induction furnace can be disassembled to facilitate coil replacement.



无缝旋转出钢结构
彻底杜绝钢花接触炉体
Seamless rotating steel structure, completely prevent the steel flower from contacting the furnace body



丝扣连接水冷电缆
Threaded water-cooled cable

钢壳熔炼炉

Steel Shell Melting Furnace

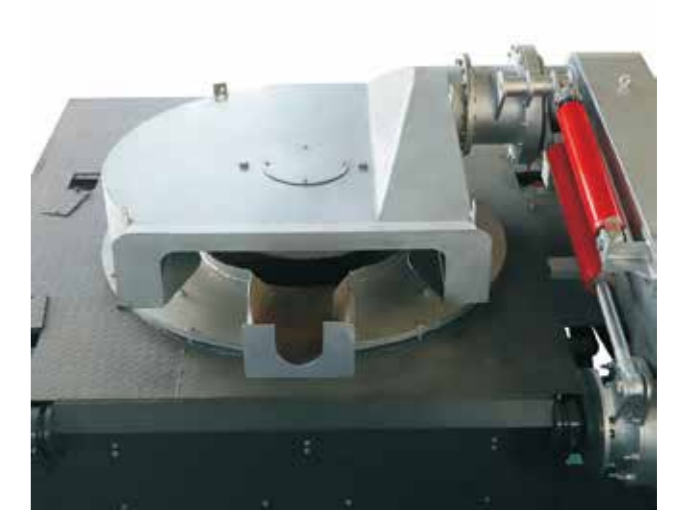
- ◆坚固耐用、美观大方，尤其是大容量炉体，需要较强的刚性结构，从倾炉的安全角度考虑，尽量使用钢壳炉。矽钢片制成的磁轭对感应线圈产生的磁力线起到了屏蔽的作用，减少了漏磁，提高了热效应，增大了产量，可节能5%—8%。
- ◆旋风式除尘炉盖的存在减少了热量的损失，也提高了设备的安全性。
- ◆旋风式吸尘罩具有极佳的吸尘、保温效果，占用更少的空间。可以前后倾翻，还可以在任意位置做停留。
- ◆旋风式吸尘罩能在炉前球化过程中进行有效的吸尘，这是传统吸尘罩无法达到的。
- ◆使用寿命长，铝在高温磁场环境下，容易造成金属韧性疲乏。在铸造企业现场，经常看到使用一年左右的铝壳炉炉壳破烂不堪，而钢壳炉由于漏磁少，设备使用寿命大大超过铝壳炉。
- ◆钢壳炉安全性能要大大优于铝壳炉，铝壳炉在熔炼的时候由于高温、重压，容易变形，安全性差。钢壳炉使用液压倾炉，安全可靠。

- ◆Strong and durable, especially for large capacity furnace body, which needs a strong rigid structure from the perspective of tilting furnace safety. The yoke made of electrical steel shields the magnetic lines generated by the induction coil, reduces the magnetic flux leakage, improves the thermal efficiency, increases the output, and saves 5-8%.
- ◆The existence of cyclone dust removal furnace cover reduces the loss of heat and improves the safety of equipment.
- ◆The cyclone type smoke hood has excellent dust absorption and heat preservation effects and occupies less space. Can be tilted back and forth and can also stay at any position.
- ◆The cyclone dust hood can effectively absorb dust during the spheroidization process in front of the furnace, which cannot be achieved by the traditional dust hood.
- ◆Long service life. Aluminum is easy to cause metal toughness fatigue under the high temperature and strong magnetic field environment. At the foundry site, it is often seen that the aluminum shell furnace used for one year or so is in poor condition, while the steel shell furnace has much longer service life than the aluminum shell furnace due to less magnetic leakage.
- ◆The safety performance of the steel shell furnace is much better than that of the aluminum shell furnace. The aluminum shell furnace is easy to deform and has poor safety due to high temperature and heavy pressure during smelting. Steel shell furnace uses hydraulic tilting furnace, which is safe and reliable.

炉体正面/Furnace positive



炉体顶部/Furnace top





钢壳熔炼炉

Steel Shell Melting Furnace

◆长弧形磁轭屏蔽和减少外部磁阻、有屏蔽线圈两端的漏磁、磁轭截面为弧形的内侧与外壁无缝紧贴，增加了有效的导磁率面积，使线圈获得了更好的支撑。独特的正反旋线圈极大的提高了系统的效率。

◆炉体装有防跌落保护装置，在炉体倾翻过程中，防跌落保护罩自动开启，形成防护栏，防治人员跌落,确保人员更安全的操作。

◆The long arc-shaped magnetic yoke shields and reduces external magnetic resistance, magnetic flux leakage at both ends of the shield coil, and the inner side and the outer wall of the yoke cross section are seamlessly attached, which increases the effective magnetic permeability area and makes the coil better support. The unique forward and reverse rotation coil greatly improves the efficiency of the system.

◆The furnace body is equipped with a fall protection device. During the process of tilting the furnace body, the fall protection cover automatically rises to form a protective fence to prevent personnel from falling and ensure safer operation of personnel.

铝壳熔炼炉

Aluminum shell melting furnace

- ◆熔化效率高、节电效果好、结构紧凑、过载能力强；
- ◆炉子周围温度低、烟尘少、作业环境好；
- ◆操作工艺简单、熔炼运行可靠；
- ◆金属成份均匀；
- ◆熔化升温快、炉温容易控制、生产效率高；
- ◆炉子利用率高、更换品种方便。

- ◆High melting efficiency, good power saving effect, compact structure and strong overload capability.
- ◆The temperature around the furnace is low, the smoke dust is less, and the working environment is good.
- ◆The operation process is simple and the smelting operation is reliable.
- ◆The metal composition is uniform.
- ◆Fast melting, easy furnace temperature control and high production efficiency.
- ◆High furnace utilization and easy replacement.



一体化中频透热炉

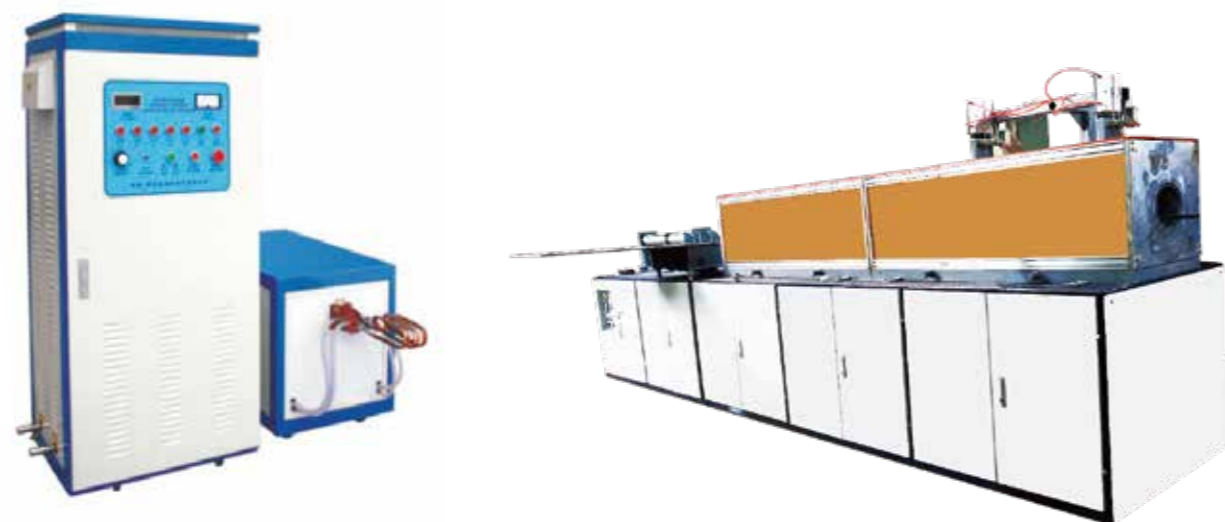
Medium frequency heating furnace

◆中频透热炉广泛用于锻造加热，用于棒料、圆钢、方钢、钢板的透热、补温、淬火下料、在线加热、局部加热及金属材料整体的调质、退火；用于轮类，套、圈、盘类，机床丝杠，半轴连杆，轴承等精锻、挤压、热轧、剪切前的加热、喷涂加热、热装配以及回火等。热处理主要供直轴、变径轴、凸轮轴、曲轴、齿轮轴等，齿，导轨，平面，球头，五金工具等多种机械（汽车、摩托车等）零件的表面热处理及金属材料整体的调质、退火、回火等。

◆加热速度快，生产效率高，氧化脱碳少，节省材料与锻模成本。

◆工作环境优越，提高工人劳动环境和公司形象，无污染，低耗能。加热均匀，芯表温差极小，温控精度高。

◆省电节能，烧损小，易启动。采用PLC控制，触摸屏人机操作界面操作灵活、可靠性高、抗干扰能力强、维护方便、容易升级改造。



超音频透热设备

Super audio frequency heating furnace



◆Immediate induction furnace is used widely in forging heating, warming of rod, round steel and cube steel. The heating in quenching, part heating, the tempering and annealing of the metal, wheels, sleeve, ring and coil etc. The precision forging of machine screw, axle rod and bearing etc. The heating, painting heating, hot installation and tempering before extruding, hot rolling and clipping. The heat treatment of main shaft (straight shaft, reducing axis, camshaft, crankshaft and bearing shaft and gear shaft), gear, guide rail, surface and ball head etc. The surface heat treatment and metal materials' tempering, annealing and tempering of hardware tools.

◆Heating increasing rapidly, high productivity efficiency, less carbon losing of oxidation, cost saving of materials and mould forging. Working environment friendly, improve the working environment condition and company image in energy saving and non-pollution.

◆Heating uniform, the temperature difference is few with high temperature control accuracy.

◆Power and energy saving, less heating damaging and start easily. With the PLC adopted, the control is easy, high safety, anti-disturb, maintain conveniently and update easily in touch screen of man-machine interface.

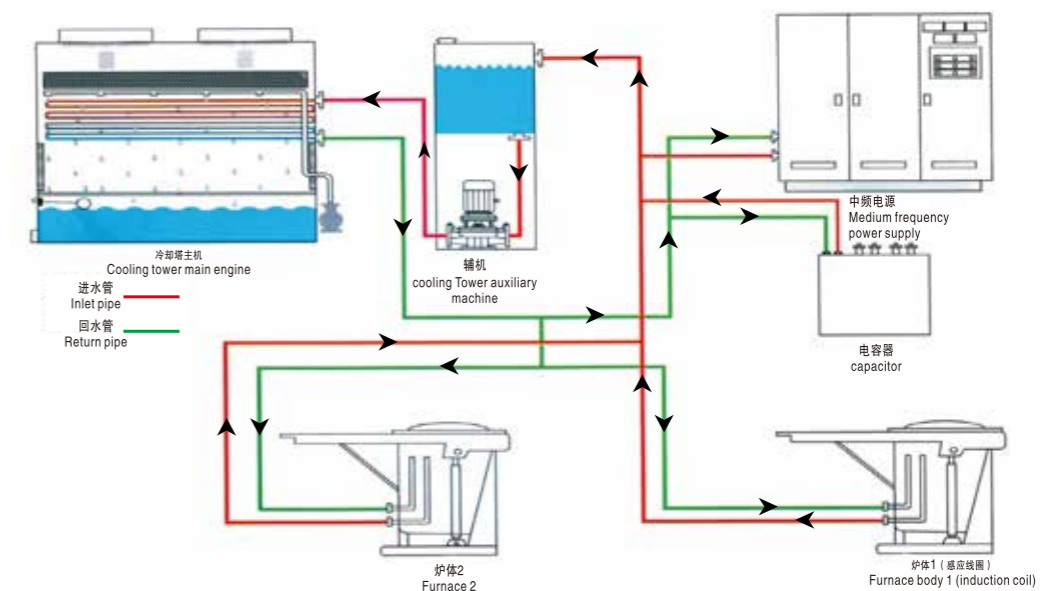


闭式冷却系统

Enclosed cooling system

- ◆闭式冷却塔所用风机为防水型铝合金外壳轴流风机，该风机为转子电机，具有结构紧凑、安装方便、运行可靠、噪音低、节能高效等特点，绝缘等级F级，防护等级IP55；叶片有钢件、尼龙、铝合金等供客户选择。
- ◆选用水泵为国内知名品牌，具有运行噪声低、效率高、维护方便、寿命长、运行费用低的特点，泵壳有铸铁和不锈钢等供客户选择。
- ◆闭式冷却塔外壳标准配置为镀铝锌板，镀层成份按重量比率分别由55%的铝、43.4%的锌和1.6%的硅组成，热反射率很高，是镀锌钢板的两倍，耐热性好，耐腐蚀性是普通热浸镀锌钢板的四倍，外观光泽漂亮。可根据客户的要求选做sus304不锈钢，热浸镀锌钢板，冷轧板喷塑等材质。
- ◆闭式冷却塔内置核心部件——冷却盘管。公司提供T2脱酸紫铜管、sus304不锈钢、热浸镀锌钢管、铝管等材质供客户选择，每一种材质的换热器都具有热交换效率高，使用寿命长的特点。
- ◆电控箱，做为闭式冷却塔的控制部分，公司选用控制电器均为知名品牌，性能稳定，操作方便，并可根据客户实际需要提供变频控制系统，实现控制稳定，抗干扰能力强，使冷却塔始终根据客户实际需要工作，实现节能、节约目的。

- ◆The fan used in the enclosed cooling tower is a waterproof aluminum alloy outer casing axial fan. The fan is a rotor motor. It has the characteristics of compact structure, convenient installation, reliable operation, low noise, energy saving and high efficiency. The insulation grade is F grade and the protection grade is IP55. There are steel parts, nylon, aluminum alloy, etc. for customers to choose.
- ◆The pump is selected as a well-known brand in China. It has the characteristics of low operating noise, high efficiency, convenient maintenance, long service life and low operating cost. The pump casing has cast iron and stainless steel for customers to choose.
- ◆The enclosed cooling tower housing is equipped with a zinc-plated plate as standard. The coating composition consists of 55% aluminum, 43.4% zinc and 1.6% silicon, respectively. The heat reflectivity is very high which is twice of galvanized steel. It has good heat resistance and corrosion resistance is four times of ordinary hot-dip galvanized steel sheet. And its appearance is beautiful. According to the customer's requirements, we can choose SUS304 stainless steel, hot dip galvanized steel sheet, cold rolled sheet spray and other materials.
- ◆The built-in core component of the closed cooling tower is cooling coil. The company provides T2 deacidified copper tube, SUS304 stainless steel, hot dip galvanized steel pipe, aluminum tube and other materials for customers to choose. And each material of heat exchanger has heat high exchange efficiency and long service life.
- ◆The electric control box is used as the control part of the enclosed cooling tower. The company selects the well-known brands control electric appliances with stable performance and convenient operation. It can provide frequency conversion control system according to the actual needs of customers to achieve stable control and strong anti-interference ability. The cooling tower always works according to the actual needs of customers to achieve energy saving and save purposes.



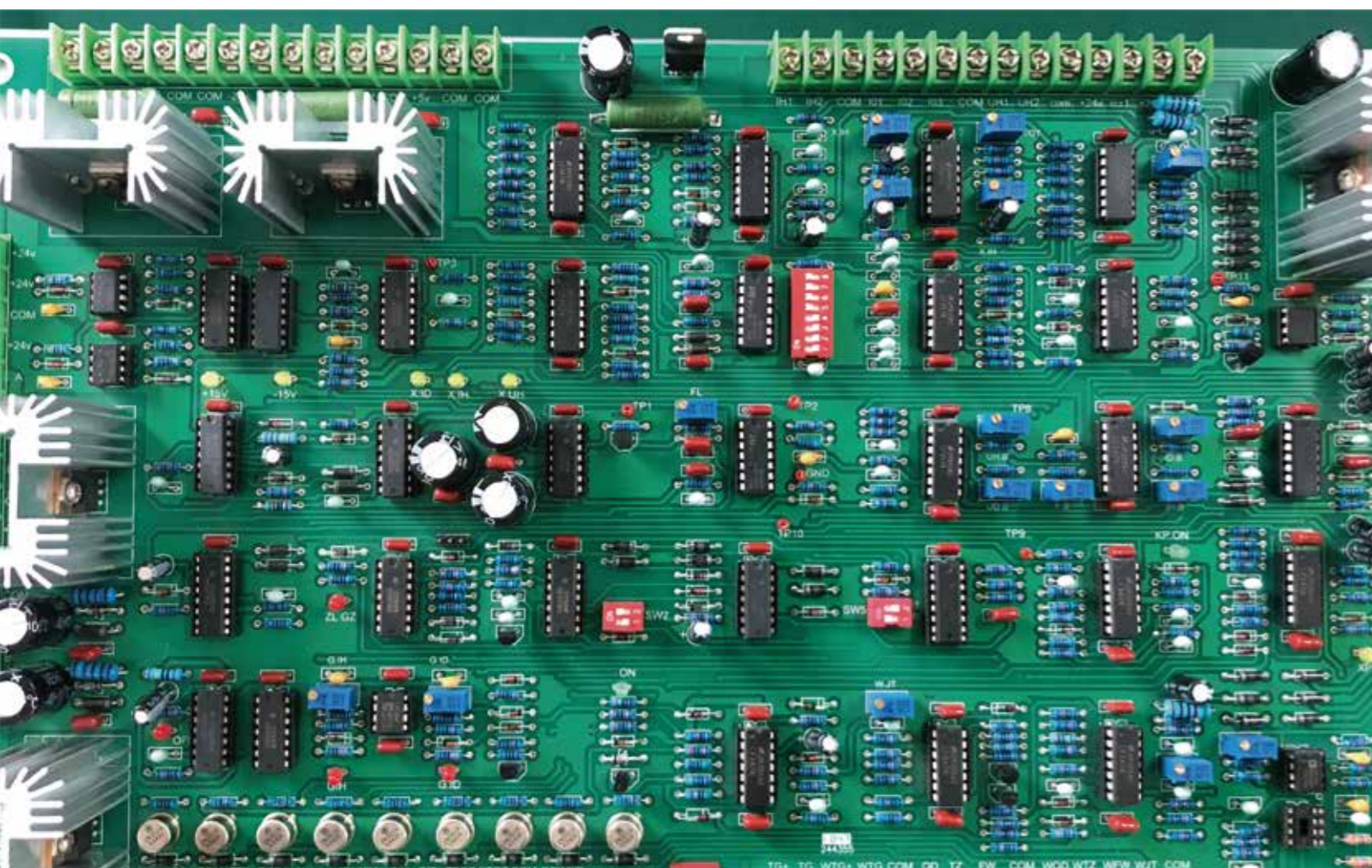
www.dinghonginduction.com

我们的技术

OUR TECHNOLOGY

先进 / 稳定 / 投资效益高

Advance / Stable / High Efficiency Investment



计算机熔炼管理操作系统

Computer Melting Management System



- ◆降低故障发生概率 / ◆Reduce the probability of failure.
- ◆降低故障排查和维修难度 / ◆Reduce the difficulty of troubleshooting and maintenance.
- ◆降低企业维修成本 / ◆Reduce company's maintenance costs.
- ◆方便企业负责人进行生产管理和数据统计
- ◆Facilitate the person in charge of the company to conduct production management and data statistics.

计算机熔炼管理操作系统——系统优点

Computer smelting management operating system - system advantages

◆计算机熔炼管理系统是由计算机、数字化主控板以及PLC等设备组成的一个网络系统，并且可以通过交换机进行扩展，在电脑或者手机上实时监测设备运行情况，方便企业负责人在任何位置对设备进行生产管理和数据统计。

The computer melting management system is a network system composed of computers, digital main control boards, PLC and other equipment, and can be expanded through switches to monitor the operation of the equipment in real time on computers or mobile phones, so as to facilitate the person in charge of the company to carry out production management and data statistics on the equipment at any position.

◆系统报警的显示 System alarm display

内部冷却水温度过高 Internal cooling water temperature is too high

内部冷却水压力过低 Internal cooling water pressure is too low

过电压保护 Over-voltage protection

过电流保护 Over-current protection

缺相保护 Phase loss protection

外部冷却水温度过高 External cooling water temperature is too high

外部冷却水压力过低 External cooling water pressure is too low

可存储报警信息，可随时查看报警记录

Alarm information can be stored and checked at any time

◆基本监测：连续监测和显示中频电源的仪表读数

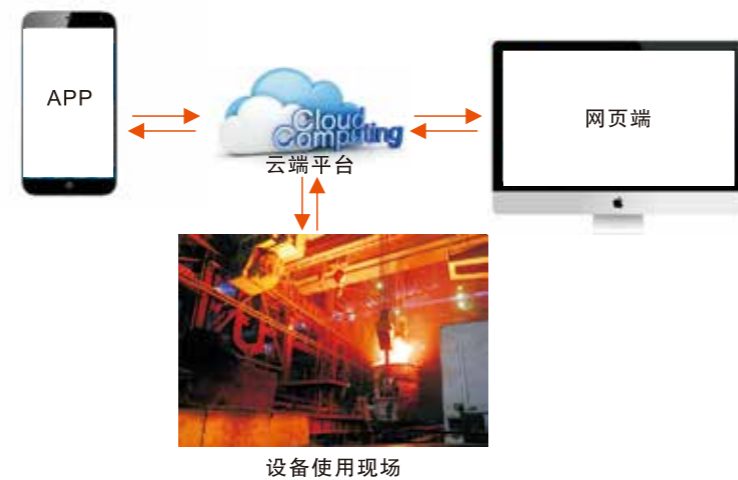
Basic monitoring: continuously monitor and display the meter reading of medium frequency power supply.

功率 Power

炉子电流 Furnace current

炉子电压 Furnace voltage

吨钢耗电量（千瓦时/吨钢） Electricity consumption per ton of steel (Kw·H/ton)



电源技术

Power technology

◆采用的串联、并联主控板技术均为国内领先的控制技术，公司内部研制，有自主知识产权，不对外销售。

The series-connected and parallel-connected main control board technology adopted is the leading control technology in China. It is developed in the company and has independent intellectual property rights and not sold abroad.

◆所有设备均装配计算机熔炼管理系统，对设备运行数据进行采集，对报警进行实时监控。

All equipment is equipped with a computer smelting management system to collect equipment operation data and monitor alarms in real time.

◆电源柜内铜排和铜管使用国内知名品牌，铜排经喷砂、钝化，制作规范。电源柜元器件布置合理，走线、布线规范，易于维修。

The copper bar and copper tube in the power cabinet are made of well-known brands in China. The copper bar is sandblasted and passivated, and the manufacturing specifications are standardized. The components of the power cabinet are reasonably arranged, the wiring and wiring specifications are easy to maintain.

◆均设计安装有快速熔断器，可对中频电源、变压器做出有效保护。

They are designed and equipped with high speed fuses, which can effectively protect the medium frequency power supply and transformer.



◆为确保设备质量与运行稳定性，电气核心元器件均采用国内外知名品牌。

In order to ensure the equipment quality and operation stability, the electrical core components are all made of well-known brands at home and abroad.

◆采用自主研发的计算机辅助设计软件和模拟系统，保证电源柜和炉体达到最佳匹配。

The computer-aided design software and simulation system independently developed are adopted to ensure the best matching between the power cabinet and the furnace body.

◆封闭式的电容柜设计，宽大的输出铜排，损耗低，柜体布局更优化。

Closed capacitor cabinet design, wide output copper bar, low loss and more optimized cabinet layout.

◆所有设备的技术参数不低于额定功率的1.3倍，提高设备的可靠性。

The technical parameters of all equipment shall not be less than 1.3 times of the rated power to improve the reliability of the equipment.

炉体技术

Furnace technology

◆旋转无间隙技术：炉体在倾炉过程中旋转无间隙，可有效防止铁水进入炉体，保护设备运行安全。

◆Rotating gapless technology: the furnace body rotates gapless during tilting, which can effectively prevent molten iron from entering the furnace body and protect the safe operation of the equipment.

◆炉体侧板结构：炉体侧板结构采用整体钢板一次成型技术，坚固耐用。

◆Side plate structure of furnace body: the side plate structure of furnace body adopts one-step forming technology of integral steel plate, which is firm and durable.

◆防跌落保护罩：炉体装有防跌落保护装置，在炉体倾翻过程中，防跌落保护罩自动升起，形成防护栏，防止人员跌落，确保人员更安全的操作。

◆Fall protection cover: the furnace body is equipped with fall protection device. During the process of tilting the furnace body, the fall protection cover automatically rises to form a protective fence to prevent personnel from falling and ensure safer operation of personnel.

◆双漏炉报警系统：分别采用直流注入式和交流感应式双报警系统，通过漏电流大小对炉衬厚度进行检测。当金属渗透到感应线圈或接近感应线圈时提前启动报警装置，封锁电源，有效的避免了穿炉事故的发生。

◆Double-leakage furnace alarm system: DC injection type and AC induction type double alarm system are used to detect the thickness of the lining through the leakage current. When the metal penetrates into the induction coil or approaches the induction coil, the alarm device is actively in advance to block the power supply, effectively avoiding the occurrence of a furnace accident.



炉体技术

Furnace technology

◆中频炉感应线圈采用洛铜无氧铜管在专用模具上绕成，中间无接头，两端采用纯铜氩弧焊，铜管采用材质为T2的优质冷挤制铜管，每组感应线圈内部没有焊缝。

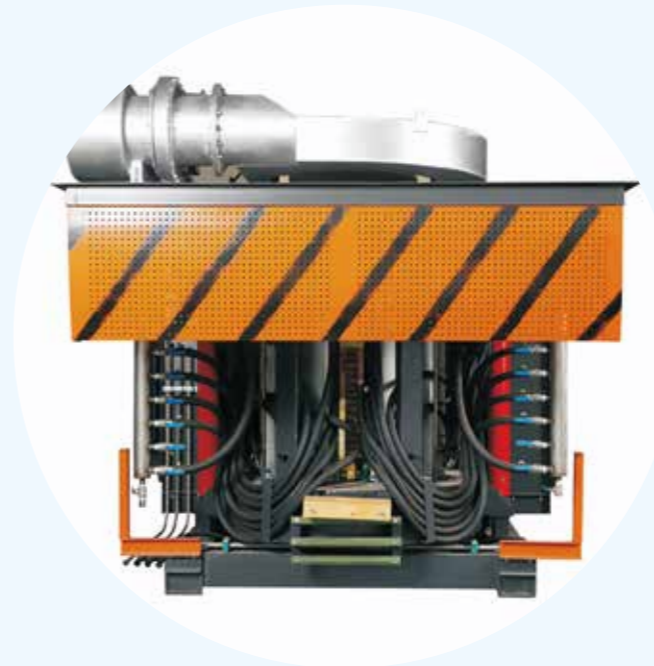
◆The induction coil is made of oxygen-free copper tube from CHINALCO Luoyang Copper Co on a special mold, no joint in the middle and argon arc welding of pure copper at both ends. Copper tubes are made of high quality cold extruded copper tubes with T2. There is no weld inside each induction coil group.

◆在中频炉感应线圈的上部和下部设不锈钢制水冷圈，与感应线圈一体化绕制成型，其目的是使炉衬材料在轴向受热均匀，延长炉衬的使用寿命；在感应线圈的上部和下部设置法拉第短路环，以充分吸收上下两端的漏磁，防止炉体截面发热。接线采用侧引出线，以减小大截面水冷电缆在倾炉时的扭矩。

◆Stainless steel cooling water rings are arranged at the upper part and the lower part of the induction coil of the medium frequency furnace and are integrally wound with the induction coil, so that the furnace lining material is heated uniformly in the axial direction and the service life of the furnace lining is prolonged. Faraday short-circuit rings are arranged at the upper part and the lower part of the induction coil to fully absorb leakage magnetic flux at the upper and the lower ends and prevent the furnace body section from generating heat. Side lead-out wires are used for wiring to reduce the torque of large-section water cooled cables when tilting the furnace.

◆雁尾型不通水磁轭：采用武钢生产的0.23mm厚高导磁取向型硅钢片进行设计，磁轭两侧的硅钢片逐级向后退15mm，形成雁尾型，有效防止磁轭边沿磁场扩散导致不锈钢挡板发热膨胀。

◆Goose-tail shape yoke: designed by 0.23mm thick and high permeability grain oriented electrical steel produced by Baowu. The electrical steel on both sides of the yoke are retracted 15mm step by step to form a goose-tail shape, effectively preventing the stainless steel baffle from heating and expanding due to magnetic field diffusion along the yoke edge.



www.dinghonginduction.com

我们的配件

OUR ACCESSORIES

齐全 / 稳固 / 坚实耐用

Complete / Solid / Durable Use



▶ 无水磁轭 (不通水磁轭)
Waterless Magnetic Yoke
(Non-water-cooled Magnetic Yoke)



▶ 液压站
Hydraulic Station



▶ 散热架
Cooling Bracket



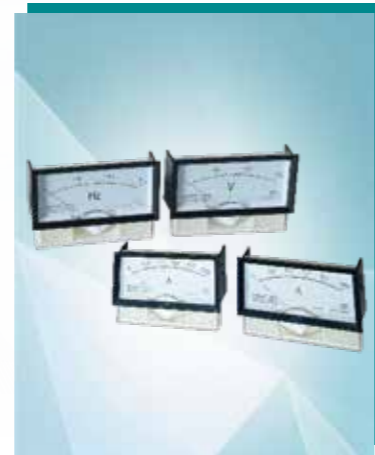
▶ 感应线圈
Induction Coil



▶ 同步变压器
Synchronizing Transformer



▶ 电阻
Resistor



▶ 仪表
Instrument



▶ 散热器
Radiator



▶ 电容器
Capacitor



▶ 电抗器
Reactor



▶ 中频漏炉检测板
Medium Frequency
Furnace Leakage Detection Board



▶ 减速机
Reducer



▶ 电感
Inductor



▶ 可控硅
Silicon Controlled Rectifier



▶ 电抗器线圈
Reactor Coil



▶ 电容
Capacitor

齐全 / 稳固 / 坚实耐用

Complete / Solid / Durable Use

www.dinghonginduction.com

我们的现场

OUR SITE





衰



售后服务

AFTER-SALE SERVICE

立足品牌全球化，服务本地化
Based on global branding and local service

维修服务 / Maintenance Service

在鼎红，我们知道您的业务不仅需要高品质的熔炼系统，您还需要与之配套的一流的售后服务。我们理解您的需求，关注您的感受。

售后服务——更快捷的服务使停炉时间降到最低。我们提供快速的，值得信赖的应急服务，在交通许可的情况下，维修人员将在接到维修通知后24小时之内到达现场。

鼎红拥有一支优秀且具备多年实战经验的服务工程师团队。每日24小时随时待机，接听您的电话，为您提供专业的技术指导，帮助远程诊断设备问题，把停炉时间降到最低。为您提供全天候的保障。如果您觉得现有的熔炼系统的服务费用太高，请联系鼎红。

设备维护计划 / Equipment maintenance plan

预防性的设备维护计划——防患于未然，保障设备连续运行。Preventive equipment maintenance plan-prevent accidents before they occur and ensure continuous operation of equipment.

为保证您的设备长期、稳定的运行，我们可以为客户提供预防性的设备维护计划。In order to ensure the long-term and stable operation of your equipment,we can provide customers with preventive equipment maintenance plans.

根据计划，对设备进行定期回访，对设备进行预防性的维护和检查，发现现存的和潜在的问题，并有针对性的进行解决，防患于未然。According to the plan, make regular return visits to the equipment, carry out preventive maintenance and inspection of the equipment, find existing and potential problems, and targeted solutions should be carried out to prevent accidents before they occur.

We know well that your business requirement is not only high-quality smelting system, but also first-class after-sales service. We understand your demand and pay attention to your feeling.

We'll minimize downtime of furnace by our fast and efficient after-sale service. We provide fast, reliable emergency services, engineers will arrive at the site within 24 hours after receiving the maintenance notice if there is no traffic problem.

Dinghong's excellent and years of practical experience service engineers team will stand by 24 hours all days and years, to answer your calls and provide professional technical guidance, remote diagnosis of equipment problem and minimize furnace downtime at anytime all the year round. If you think the service cost of existing smelting system is too high, please feel free to contact us.

KGPS串联型中频电源选型参考 KGPS Series Medium frequency power supply selection reference

型号/Model	进线电压 Input Voltage (V)	进线电流 Input current (A)	直流电压 DC voltage (V)	直流电流 DC current (A)	中频电压 MF voltage (V)	中频频率 MF frequency (Hz)	中频功率 MF power (Kw)	配套电炉 Capacity (T)
KGPS-CL-250Kw	380/三相 Three phase	408A	500V	500A	1800V	100-600Hz	250Kw	0.25T
KGPS-CL-500Kw		816A		1000A			500Kw	0.5T
KGPS-CL-800Kw		1305A		1600A			800Kw	1T
KGPS-CL-1000Kw	575/六相 Six phase	526A	775V	1290A	2800V	100-400Hz	1000Kw	1-1.5T
KGPS-CL-1200Kw		631A		1548A			1200Kw	1.5-2T
KGPS-CL-1500Kw		789A		1935A			1500Kw	2-3T
KGPS-CL-2000Kw		1052A		2580A			2000Kw	2-3T
KGPS-CL-2500Kw		1315A		3225A			2500Kw	3-5T
KGPS-CL-3000Kw		1578A		3870A			3000Kw	3-5T
KGPS-CL-3500Kw		1842A		4516A			3500Kw	4-6T
KGPS-CL-4000Kw		2105A		5161A			4000Kw	5-7T
KGPS-CL-5000Kw		2632A		6451A			5000Kw	8T
KGPS-CL-6000Kw		3158A		7741A			6000Kw	8-10T
KGPS-CL-8000Kw	660/十二相 Twelve phase	1833A	890V	8988A	3000V	100-500Hz	8000Kw	10-12T
KGPS-CL-10000Kw		2291A		11235A			10000Kw	15T
KGPS-CL-15000Kw		3438A		16853A			15000Kw	20T